

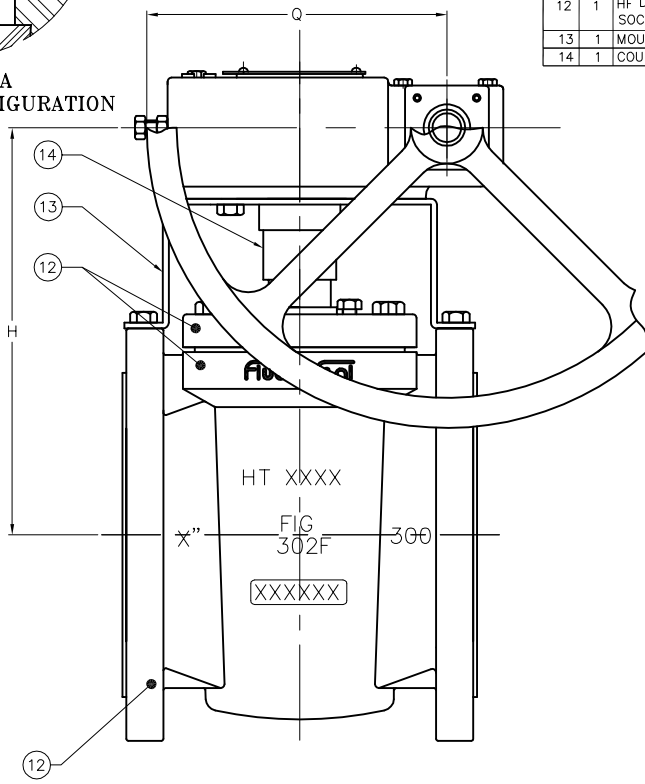
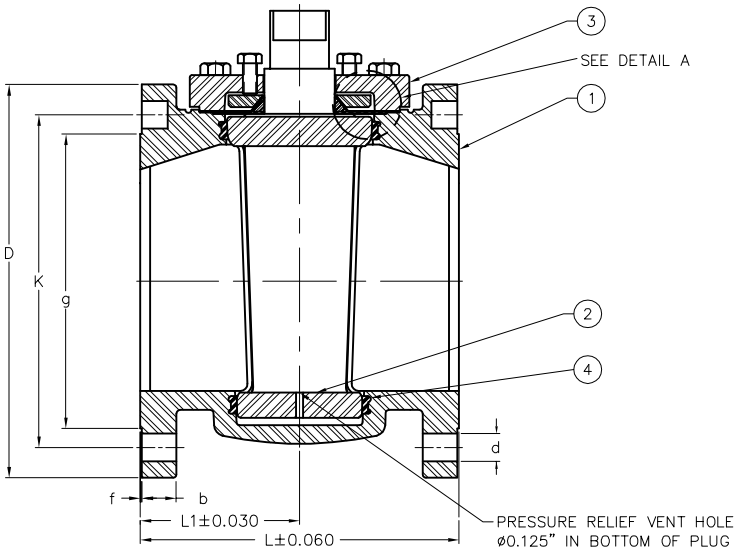
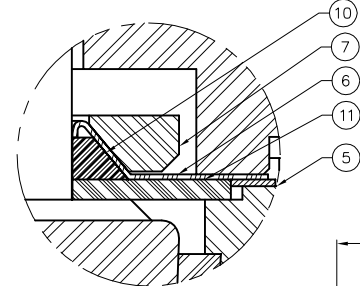
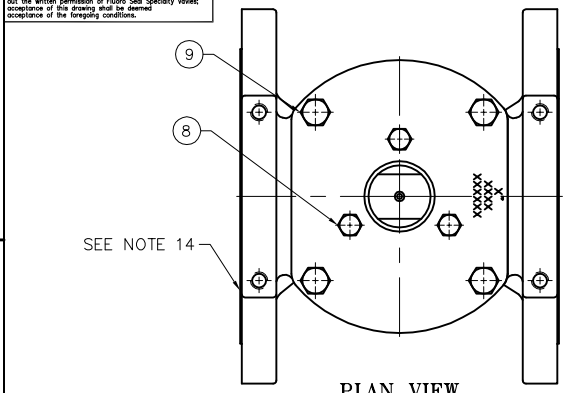
This drawing and the information herein contained is the property of Fluoro Seal Specialty Valves and/or its subsidiaries and is supplied upon the express condition that the same be returned to Fluoro Seal Specialty Valves upon receipt of information herein contained to be treated as secret and confidential. Its reproduction in whole or in part without the written permission of Fluoro Seal Specialty Valves acceptance of this drawing shall be deemed acceptance of the foregoing conditions.

FOR PROPOSAL PURPOSES ONLY

BILL OF MATERIAL				
ITEM	QTY.	DESCRIPTION	DWG#	PART#
1	1	BODY , ASTM A494, M35-1	310-5-OXX	310-5-OXX
2	1	PLUG ,ASTM A494, M35-1	420-5-OXX	420-5-OXX
3	1	COVER ASTM A494, M35-1	500-5-OXX	500-5-OXX
4	1	SLEEVE, VIRGIN DUPONT PTFE	620-5-OXX	620-5-1XX
5	1	DIAPHRAGM, VIRGIN DUPONT PTFE	660-0-OXX	660-0-OXX
6	1	METAL DIAPHRAGM, MONEL 400	680-0-OXX	680-0-OXX
7	1	THRUST WASHER, ASTM A494, M35-1	640-5-OXX	640-5-OXX
8	3	ADJUSTMENT SCREWS, A193, B7M	PURCHASE	PURCHASE
9	VAR.	COVER BOLT, ASTM A193 Gr B7M	PURCHASE	PURCHASE
10	1	DELTA RING, FLEX GRAPHITE	670-0-1XX	670-0-1XX
11	1	RING, FLEX GRAPHITE	675-0-1XX	675-0-1XX
12	1	HF DETECTIONB PAINT SOCONY 220-Y-7	PURCHASE	PURCHASE
13	1	MOUNTING BRACKET, 304 S.S	PURCHASE	PURCHASE
14	1	COUPLING, 4140	PURCHASE	PURCHASE

**DETAIL A
FIRE-SEAL CONFIGURATION**

- NOTES:
- (EG) ENCLOSED GEAR OPERATED
 - ACTUATORS OPTIONAL ON ALL SIZES
 - FIRE TEST IN ACCORDANCE WITH API-607
 - INSPECTION & TESTING IN ACCORDANCE WITH API 598 & MSS SP61
 - THE MEDIUM FOR SHELL TEST IS WATER AT 925 PSI
 - THE MEDIUM FOR SEAT TEST IS AIR AT 411 PSI
 - ALL VALVES ARE DESIGNED, MANUFACTURED & TESTED IN ACCORDANCE WITH ASME B16.34
 - FACE TO FACE AS PER ASME B16.10
 - ALL DIMENSIONS IN CONFORMANCE WITH ASME B16.5
 - VISUAL METHOD FOR EXAMINATION OF SURFACE IRREGULARITIES AS PER MSS SP-55
 - THE WORKING PRESSURE @100 F IS 600 PSI
 - SHELL TEST WITH HELIUM AT 160 PSI
 - NO LUBRICANTS ARE USED IN ASSEMBLY
 - THE FINISHING OF RAISED FACE IS A PHONOGRAPHIC OR CONCENTRIC V - SHAPED GROOVES, 46-49 GROOVES PER INCH, APPROX. 0.001" DEEP, USING A 0.030" TOOL NOSE RADIUS, IN ACCORDANCE WITH MSS-SP-6 & ASME B16.5 (2 PLACES)
 - THE ALLOWABLE TOLERANCE ON THE CONICAL SURFACE OF THE PLUG IS ±0.002"
 - NO LANTERN RINGS, GEARS, FITTINGS, PACKING, LUBRICANTS OR BULL PLUGS IN THE AREA OF THE BONNET PACKING IS USED
 - ALL DIMENSIONS ARE IN INCHES



SIZE	TECHNICAL DATA										Wt's (lbs)	Wt's (Kg)	% OF PORT
	L	H	D	K	g	b	f	d	Q	L1			
8" EG	16.50	12.75	15.00	13.00	10.63	1.63	0.060	1.00(12X)	9.75	8.25	311	141.4	44
10" EG	18.00	14.68	17.50	15.25	12.75	1.88	0.060	1.13(16X)	9.75	9.00	464	210.9	50
12" EG	19.75	16.40	20.50	17.75	15.00	2.00	0.060	1.25(16X)	16.50	9.88	614	279.0	49
14" EG	30	17.40	23.00	20.25	16.25	2.12	0.060	1.25(20X)	16.50	15.0	800	364	40
16" EG	33	21.38	25.50	22.50	18.50	2.25	0.060	1.38(20X)	16.50	16.5	1407	640	57

NPD-0219	05/12/19	M.B.	A.R.
DESCRIPTION	DATE	DFTR	APVD
REVISION			
TITLE: FLUOROSEAL PLUG VALVE 8" - 16" HF ALKYLATION SERVICE 302F - HF - MO - MO			
SIZE	DWG NO	FPS-302-F-HF-FS-16-20	REV 0
DRAWN BY: MBENSLAH		DATE: 2006/12/19	SCALE: N.T.S.
CHKD BY: A.ROUET		DATE: 2006/12/19	SHEET: 1/1
6418 Transacodion Highway W., Montreal QC, H4T 1K4 TEL: (514)739-0220 FAX: (514)739-5452		THIRD ANGLE PROJECTION DO NOT SCALE DRAWING	